

# Threat Assessment and Behavior Interventions for Sexual Misconduct

Krista Anderson, Systemwide Title IX Coordinator

Fall 2023



1

1

## Agenda

1. Triage & Case Mgt
2. Threat Assessment Tools
3. Title IX & Behavior Intervention Teams: Reporting & Interventions
4. Documentation & Record Keeping

2

2



# Triage & Case Management

3

3

## Types of Concerning Behavior

Sexual Harassment or Sexual Misconduct	Sexual Violence	Dating or Domestic Violence	Stalking
Sexual Exploitation	Disruptive or Interfering Conduct	Suicidal Ideation or Threats	Hospitalizations
Homicidal Ideation or Threats	Property Damage	Safety Concerns	Actions Endangering Self or Others

4

4

## Other Triage Analysis & Considerations

Person(s) Affiliation  
to the Institution?

Incident Location(s)

Date/Time of  
Incident

Time of Alleged  
Incident:  
Institutional Nexus  
or Jurisdiction?

Institutional Action?  
Preventative Action?  
Remedies?

Level of Concern?  
Threat Level?



THE UNIVERSITY of TEXAS SYSTEM  
THIRTEEN INSTITUTIONS. UNLIMITED POSSIBILITIES.

5

5

## Other Required Action?

### Type of Concern

### Action

Non-emergency behavioral or wellness  
issues(s)

Refer to Behavior Intervention Team (BIT) or  
campus equivalent

Immediate safety concerns (emergencies)  
or welfare check required

Report immediately to 911

Clery reportable crimes that meet Clery  
geography requirements and/or timely  
warning requirements

Timely Warnings: Report immediately to campus  
law enforcement

Clery Crime Reporting: Report to the campus  
Clery Manager

Alleged abuse and/or neglect of minors

Report immediately to Child Protective Services  
or state equivalent

Alleged conduct could violate other  
institutional policies

Refer to the appropriate office(s) who oversees  
the applicable policies

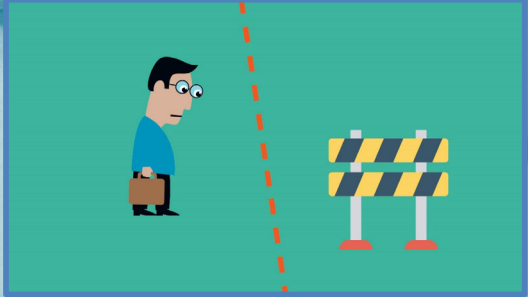
6

## Time Out

Limits of your role

**Good Boundaries:**

- Limits on your role are ok!
- Each person has an **important** yet **distinct role**, based on expertise, experience, scope of your job, etc.
- **All roles and actions** (seemingly “big” or “small”) are **critical** to the overall response and resolution of a crisis or emergency.

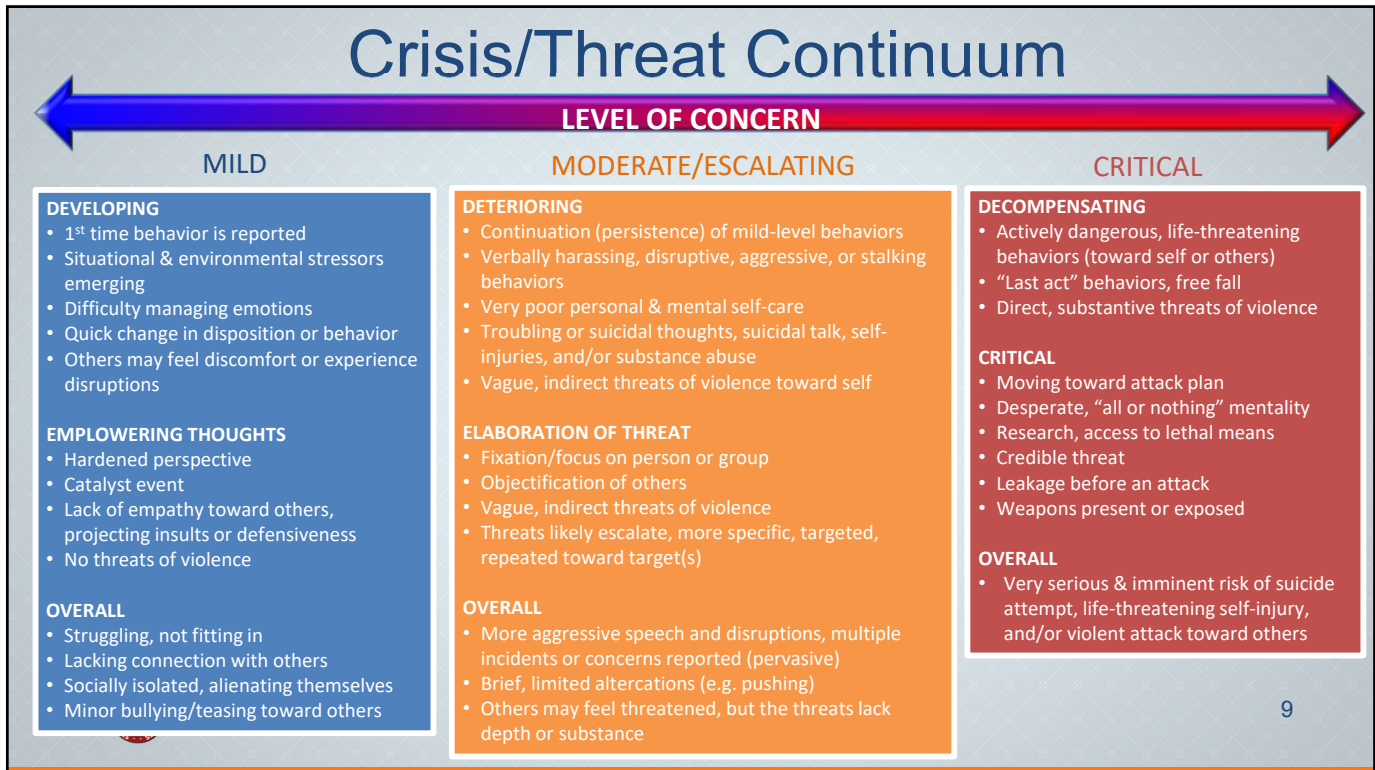


7

## Threat Assessment Tools



8



9

## Terminology Examples



- **“Threat”**: Threat of...physical violence or harm, safety, exploitation, damages (implicit or explicit), or possible emotional or mental harm
- **“Severe”**: Physically threatening or humiliating; effects of the alleged conduct to a reasonable person (using a “reasonable person” standard)
- **“Pervasive”**: Frequency, duration of the alleged conduct
- **“Objectively offensive”**: To a reasonable person (using a “reasonable person” standard)
- **“Reasonable person” standard**: An objective test to denote a hypothetical person who exercises average care, skill, and judgment in conduct under similar circumstances as a comparative standard.
- **“Totality of the circumstances”**:  
Examples: the degree of the alleged conduct’s interference with a person or effects in an educational or work setting, type of alleged conduct, frequency and duration of the conduct, knowingly unwelcome in nature

10

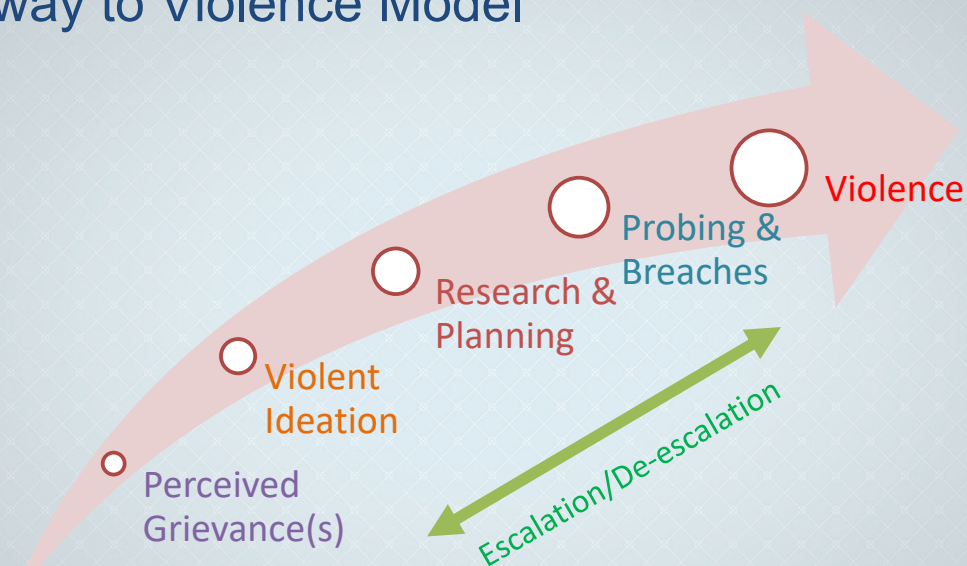
10

## Macro-Analysis – Level of Threat

- Assess & contextualize the **known risk factors**
- Examine the **totality of the circumstances**
- Identify **unknown areas** for probing

11

## Pathway to Violence Model



12

# Risk Factors for Targeted, Premeditated Violence



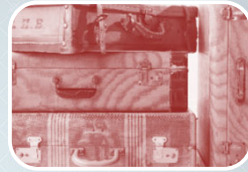
Teasing/Bulling of Others



Feeling Marginalized



Perceived Injustice(s)



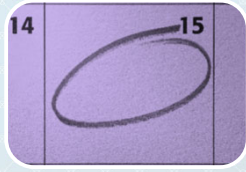
Grudges or Resentments



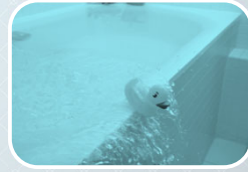
Lacking Connection or Socially Isolated



Objectification of Others



Catalyst Event



Free Fall



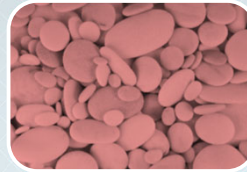
THE UNIVERSITY of TEXAS SYSTEM  
THIRTEEN INSTITUTIONS. UNLIMITED POSSIBILITIES.

Source: *Culturally Competent Threat Assessment, International Alliance for Care & Threat Teams (InterACTT) (2022)*

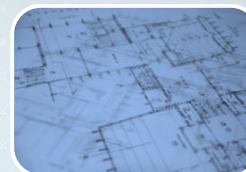
# Risk Factors for Targeted, Premeditated Violence (Cont.)



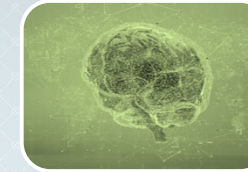
Hardened Perspective



Lacking Empathy or Remorse



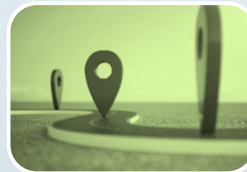
Violent Fantasy Rehearsal or Ideation



Mental Illness (Untreated or Undiagnosed)



Fixation/Focus on Person or Group



Location Targeted



Direct Communicated Threat of Violence



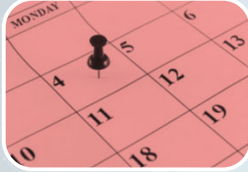
Current Suicidal Ideation & Planning



THE UNIVERSITY of TEXAS SYSTEM  
THIRTEEN INSTITUTIONS. UNLIMITED POSSIBILITIES.

Source: *Culturally Competent Threat Assessment, International Alliance for Care & Threat Teams (InterACTT) (2022)*

## Risk Factors for Targeted, Premeditated Violence (Cont.)



Timeframe for  
Planned Violence



Access to Means  
& Weapons



Leakage of Plan



“Last Act”  
Behaviors



THE UNIVERSITY of TEXAS SYSTEM  
THIRTEEN INSTITUTIONS. UNLIMITED POSSIBILITIES.

Source: *Culturally Competent Threat Assessment, International Alliance for Care & Threat Teams (InterACTT) (2022)*

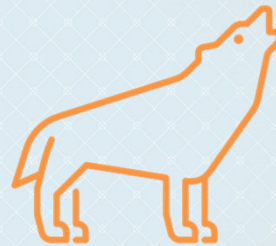
15

15

## Hunters vs. Howlers



**Example Tactics of Hunters:**  
Operates in stealth, avoiding notice from others; typically has a goal of wanting to harm others; and follows a path of progression toward violence through (a) **surveillance**, (b) gathering **intelligence**, (c) obtaining **weapons**, and then (d) **acting** on a plan of violence.



**Example Tactics of Howlers:**  
Makes transient threats; attracts attention; acts out toward others to frighten or intimidate; wants to be seen and heard; wants to control a victim's emotional state; can be overtly “in your face;” and typically doesn't want to harm others physically.



THE UNIVERSITY of TEXAS SYSTEM  
THIRTEEN INSTITUTIONS. UNLIMITED POSSIBILITIES.

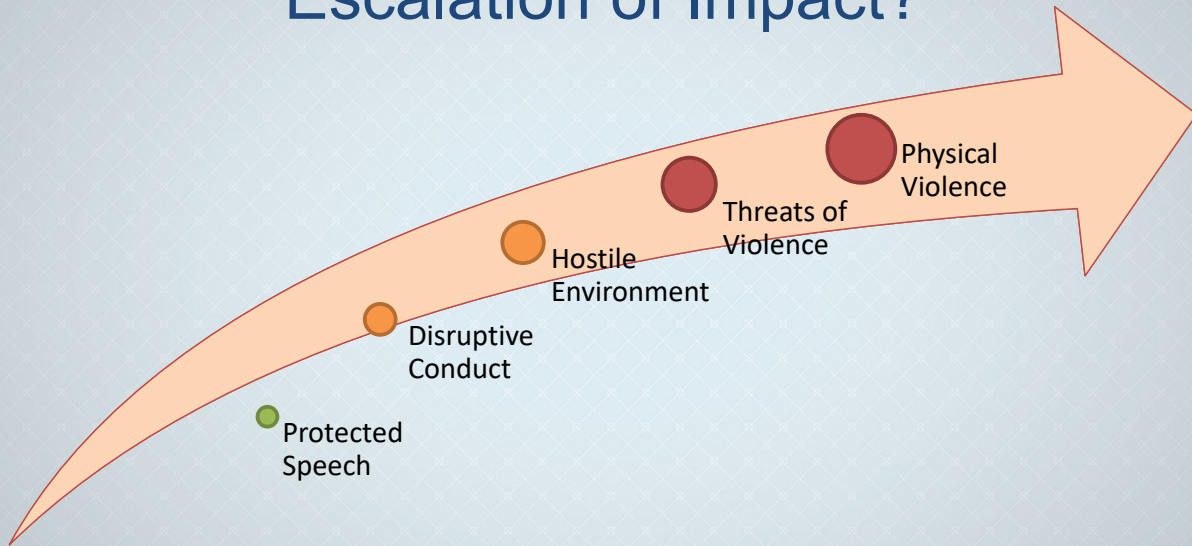
Source: *Perspectives on Threat Assessment (Calhoun & Weston, 2015)*

16

16



# The Speech in Question: Escalation of Impact?



THE UNIVERSITY of TEXAS SYSTEM  
THIRTEEN INSTITUTIONS. UNLIMITED POSSIBILITIES.

## Transient vs. Substantive Threats of Violence

## Transient Threats

- Statements that **do not express a lasting intent to harm** themselves or someone else
- **“Figure of speech”** or short-term feelings
- **Impulsive** or reactionary
- **“Howlers”** typically engage in transient threats



## Substantive Threats

- Statements that express a **credible** and/or **continuing threat to harm** themselves or someone else



# Substantive Threats

Affective Violence	Premeditated Violence
<ul style="list-style-type: none"> <li>• <b>Impulsive;</b> Exhibits lack of control, forethought, or planning</li> <li>• <b>Emotional reaction;</b> Exhibits impaired emotional regulation</li> <li>• Based on <b>situational</b> and <b>environmental stressors</b></li> <li>• <b>More difficult to predict or assess</b> from a threat assessment perspective</li> </ul>	<ul style="list-style-type: none"> <li>• <b>Long-term feelings established</b> which extends <b>beyond an immediate incident or argument</b></li> <li>• Deliberate <b>planning</b></li> <li>• Desire to <b>harm self or others;</b> Willing to sacrifice self for a "cause"</li> <li>• Based on <b>perceived grievance(s)</b></li> <li>• <b>"Hunters"</b> typically engage in <u>premeditated violence</u></li> </ul>

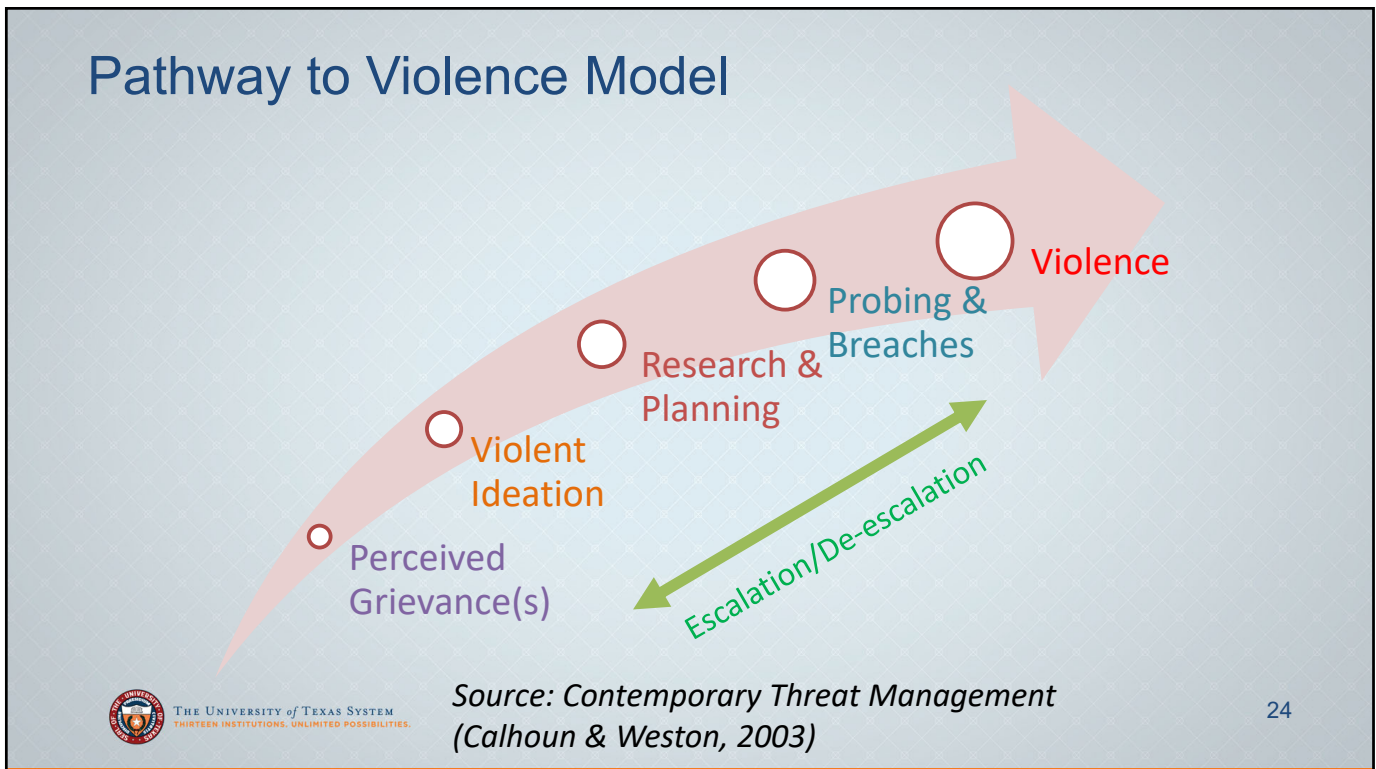


# THE GREY AREA

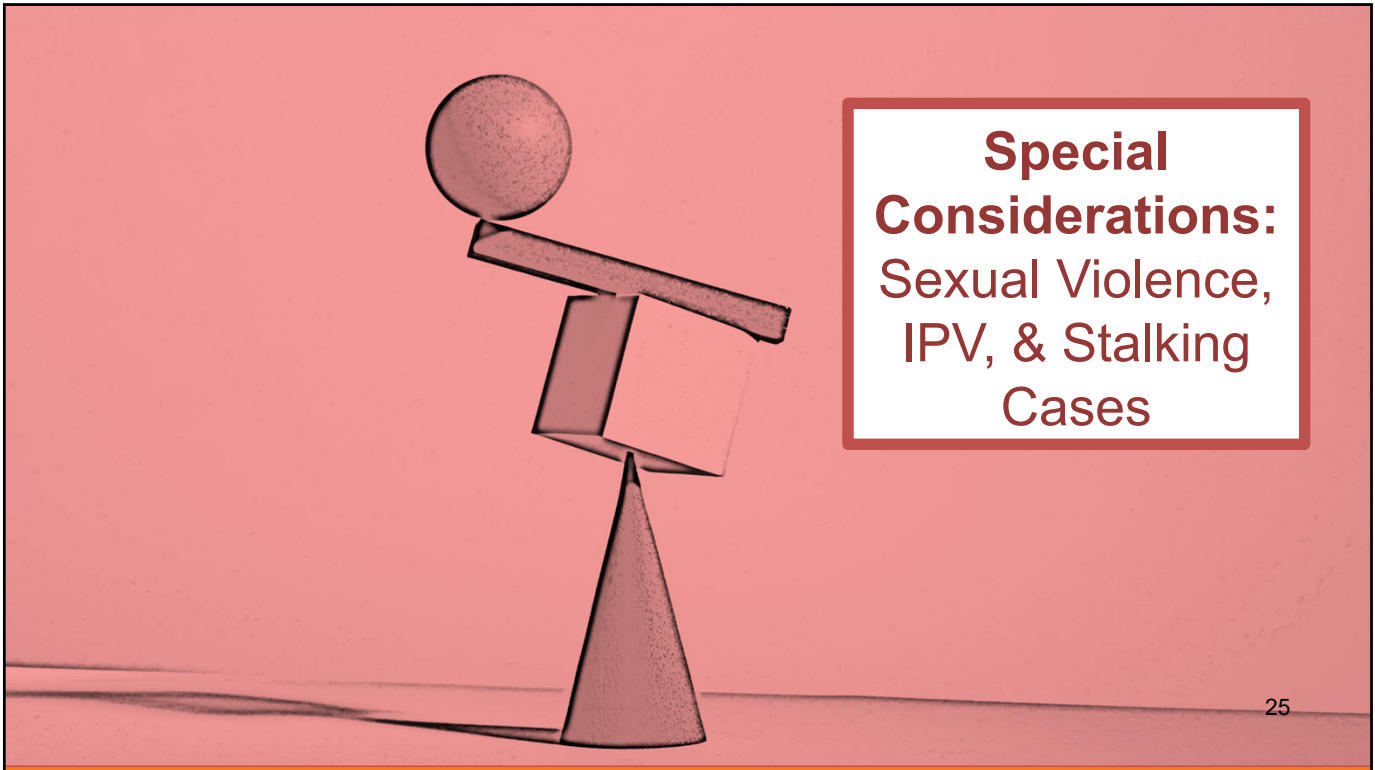




23



24



25

## Determining Predominant Aggressors

### Common Considerations:

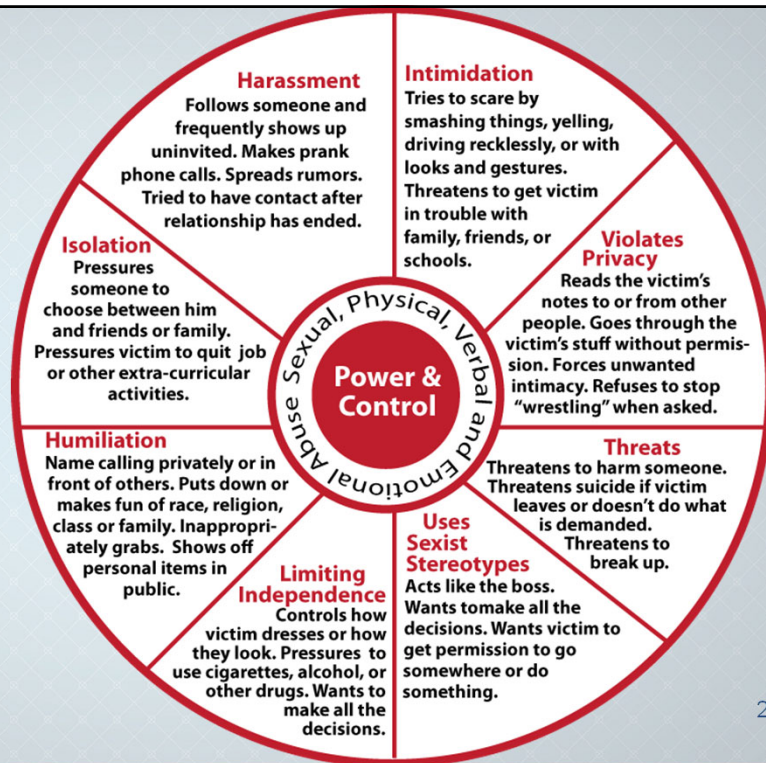
- Indicators of **power & control**
- Presence or threat of a **weapon**
- **History** of dating or domestic violence
- Aggressive or hostile **body language**
- Pre-existing **protective orders** or “**no contact**” directives
- Comparative extent of **injury** (if both are injured)
- **Property** damage
- Elements of **fear**

*Source:*  
*The National Center for Campus Public Safety*

26

## Power & Control Wheel (Examples)

Source: [www.alteristic.org](http://www.alteristic.org)



27

27

## Examples of Predatory Behaviors

- Tests the **boundaries** of the prospective victim.
- Uses **grooming** tactics: Isolation of the prospective victim, trust building, gift giving, have "secrets" between the perpetrator & victim.
- **Plans** and **premeditates** assaults.
- Uses "**psychological**" **weapons** – power, control, manipulation, threats\*.
- Uses **alcohol** and/or **drugs** as a weapon to incapacitate a prospective victim.

*Note: "Threats" may not be threats of violence*

28

28

# Examples of Psychological Manipulation

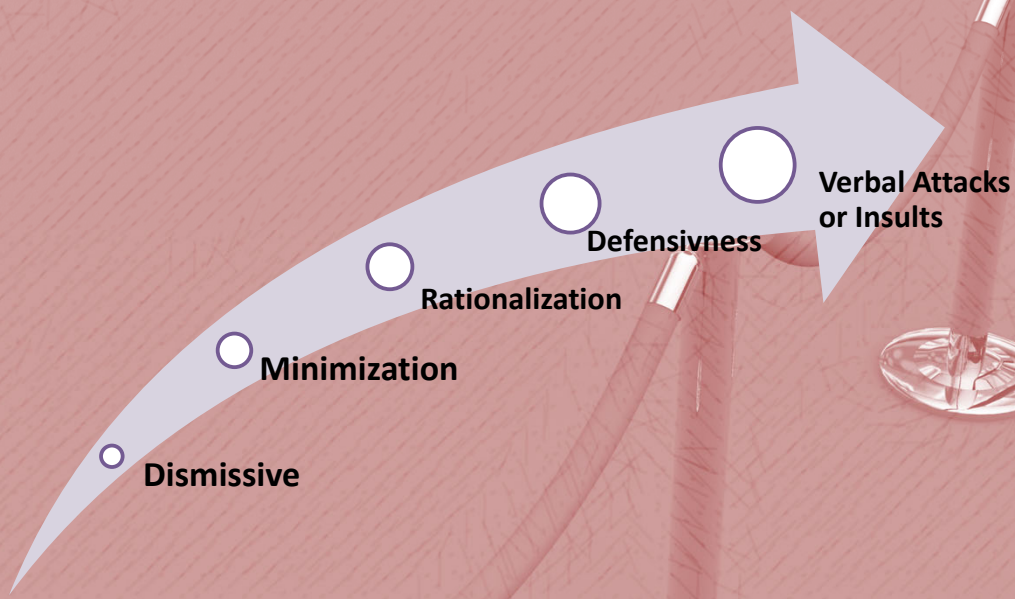
29

Type of Response	Example Statements	
<b>Dismissive</b>	<ul style="list-style-type: none"> <li>• <i>I <u>never</u> said/did that.</i></li> <li>• <i><u>Your</u> memory is bad.</i></li> <li>• <i>I don't remember it that way.</i></li> </ul>	<ul style="list-style-type: none"> <li>• <i>That didn't happen. [or] That's not what happened.</i></li> <li>• <i>I have no idea what you are talking about.</i></li> </ul>
<b>Minimizing</b>	<ul style="list-style-type: none"> <li>• <i>It's <u>only</u> a joke. [or] It's not that bad.</i></li> <li>• <i>We're <u>just</u> having fun.</i></li> </ul>	<ul style="list-style-type: none"> <li>• <i><u>Nobody</u> got hurt.</i></li> <li>• <i>What's the <u>big</u> deal?</i></li> </ul>
<b>Rationalizing or Making Excuses</b>	<ul style="list-style-type: none"> <li>• <i>This wasn't ever an issue before now.</i></li> <li>• <i>I said/did _____ because _____.</i></li> <li>• <i>I didn't even know I did anything.</i></li> <li>• <i>I didn't mean it like that.</i></li> </ul>	<ul style="list-style-type: none"> <li>• <i>That's not how things used to be.</i></li> <li>• <i><u>No one else</u> is saying anything.</i></li> <li>• <i><u>Others</u>, even <u>you</u>, do the same thing too.</i></li> </ul>
<b>Attacking or Defensive</b>	<ul style="list-style-type: none"> <li>• <i><u>You're</u> too sensitive. [or] <u>You're</u> overreacting.</i></li> <li>• <i><u>You're</u> petty. [or] <u>You're</u> jealous.</i></li> <li>• <i><u>You</u> are taking it the wrong way.</i></li> <li>• <i><u>You</u> think you are better than everyone else.</i></li> <li>• <i><u>You</u> can't take a joke.</i></li> <li>• <i>This is why nobody likes <u>you</u>.</i></li> </ul>	<ul style="list-style-type: none"> <li>• <i>It's <u>your</u> fault because _____.</i></li> <li>• <i>What about when <u>you</u> said/did _____?</i></li> <li>• <i>Why are <u>you</u> so emotional?</i></li> <li>• <i><u>You're</u> letting your emotions get the better of you.</i></li> <li>• <i><u>Who</u> told you that? What did <u>they</u> say?</i></li> <li>• <i>What do <u>you</u> have to back that up?</i></li> </ul>

29

# Escalation of Verbal Responses

30



30



## IPV Warning Signs: Triage Questions

31

31

### Has the person of concern:

- Prevented you from talking to others such as family or friends?
- Listened to your private phone calls or read your email?
- Acted jealous?
- Humiliated you at home or in public?
- Broken your personal belongings or damaged your property?
- Prevented you from leaving or held you against your will?
- Behaved violently or aggressively at home or in public?
- Assaulted your friends or family?
- Been arrested in the past for violence?

### **Assessing Danger**

Example Questions  
for the Person  
Targeted



Sources: National Center for Campus Public Safety;  
[Stalkingawareness.org](http://Stalkingawareness.org)

32

32



## Assessing Lethality

Example Questions  
for the Person  
Targeted

### Has the person of concern:

- Have access to a weapon, and/or threatened to use a weapon?
- Threatened to harm or kidnap your children?
- Threatened to kill you, themselves, or others?
- Harmed your pet(s)?
- Been abusing alcohol or drugs?
- Stalked or followed you? Showing up unannounced?
- Forced confrontation(s) with you?
- Forced you or your children to flee in the past?



THE UNIVERSITY of TEXAS SYSTEM  
THIRTEEN INSTITUTIONS. UNLIMITED POSSIBILITIES.

Sources: National Center for Campus Public Safety;  
[Stalkingawareness.org](http://Stalkingawareness.org)

33

33

## Title IX/BIT Reporting

34

34

## Reporting Information to the Title IX Coordinator

### Title IX Coordinator should receive information about:

- Information or disclosures of **sexual violence, sexual assault, dating violence, domestic violence, stalking**, or other **sexual misconduct** cases
- Signs of possible **'abusive'** relationship
- **Power and control** behaviors, **predatory behaviors** relating to sexual violence, sexual assault, dating violence, domestic violence, stalking cases
- **Threats of violence/harm, homicidal threats** relating to IPV



35

35

## Reporting Information to the BIT

### BIT should receive information about:

- Information or disclosures of **wellness issues** or **basic needs not met**
- **Personal impacts:** Decline in academics or mental health, financial instability, unsafe housing, social isolation, emotionally heightened
- **Self-harm, suicidal ideation, or suicide attempts**
- **Disruptions, interruptions, or "acting out"** in learning or working environments
- **Bullying, teasing, or verbally aggressive** toward others
- Signs of possible **'abusive'** relationship
- **Power and control** behaviors, **predatory behaviors** relating to sexual violence, sexual assault, dating violence, domestic violence, stalking cases
- **Threats of violence/harm, homicidal threats**



36

36

# Title IX & BIT Information Sharing - What & When?

**Title IX Coordinator**

*Promptly, daily triage*

**BIT**

Title IX Office should receive information about:

- **Sexual violence, sexual assault, dating violence, domestic violence, stalking, or other sexual misconduct** cases

BIT should receive information about:

- **Wellness issues or basic needs not met**
- **Personal impacts:** decline in academics or mental health, financial instability, unsafe housing
- **Self-harm, suicidal ideation, or suicide attempts**
- **Disruptions, interruptions, or "acting out"** in learning or working environments
- **Bullying, teasing, or verbally aggressive** toward others

May be applicable to Title IX Coordinator and BIT:

- Signs of possible **'abusive'** relationship
- **Power and control behaviors, predatory behaviors** relating to sexual violence, sexual assault, dating violence, domestic violence, stalking cases
- **Threats of violence/harm, homicidal threats**

37

37

## Title IX/BIT Intervention Strategies

38

38

## Title IX Example Interventions

- **Outreach** to CP (victim/survivor) or RP (alleged of a policy violation)
- Coordinate **supportive measures** for CP or RP
- **Safety planning** options
- **Sexual Misconduct Grievance Process**
  - Formal grievance process
  - Informal resolution process (if available)
- Refer for **Interim Action** considerations:
  - **Emergency Removal (Dean of Students)**
  - **Admin Leave (Provost or HR)**
- Refer to **BIT** (wellness or safety concerns)
- Collaborate with **BIT** on **intervention strategies**
- Contact **police** for **emergency welfare check, close patrol, or other**



THIRTEEN INSTITUTIONS. UNLIMITED POSSIBILITIES.

39

39

## Examples of Supportive Measures

### Non-Disciplinary & Non-Punitive Measures...

that do not  
unreasonably  
burden the other  
party

Housing  
Reassignment

Counseling  
Services

Class Extensions  
or Adjustments

Work or Class  
Modifications

Class Withdrawal  
or Retake  
(w/o penalty)

Leave of Absence

Mutual  
No-Contact  
Btwn Parties

Campus Escort  
Services

Increased  
Campus Security

40

## BIT Example Interventions

- **Outreach** to the person of concern
  - **Wellness meeting** w/ person of concern
  - **Warm referrals** to resources or support services
  - Coordinate **resources & support services**
  - **Data mining & collaboration** with w/ **key campus stakeholders** (advisors, faculty, supervisors, Dean of Students, etc.)
  - Refer to **Title IX** (TIX reportable information known)
  - Collaborate with **Title IX**
  - Refer for **Disciplinary Review/Action** (including **Interim Action** considerations)
  - Contact **emergency contact(s)** listed
  - Call **police** for emergency welfare check, close patrol, or back-up
  - Refer for a **No Trespass Directive** (non-affiliated visitors)
- Mitigate risk by engaging directly with the person of concern
- Elevated or High Risk Levels



THIRTEEN INSTITUTIONS. UNLIMITED POSSIBILITIES.

41

41

## Privacy & Confidentiality of Records

All records are treated with the greatest degree of confidentiality possible...

...With respect to the university's obligations to investigate allegations of sexual misconduct & take appropriate action in accordance with institutional policy.



THE UNIVERSITY of TEXAS SYSTEM  
THIRTEEN INSTITUTIONS. UNLIMITED POSSIBILITIES.



42

42

## Examples of “Need-To-Know” Basis

Who Needs-To-Know?	Example Information-Sharing & Rationales
<b>Provost, Dean, Chair</b>	Administrative leave, pending an investigation outcome
<b>Advisors, Professors</b>	Coordinating class modifications, alternative assignments or make-up exams, academic drops
<b>Supervisor, HR Director</b>	Work accommodations, flexible scheduling, remote work option, alternative supervision/evaluations
<b>Campus Police</b>	Emergency welfare check, threat assessment, close patrol, escort services
<b>Dean of Students, Behavior Intervention Team</b>	Wellness issues, disruptive conduct, escalating conduct, self-harm or suicidal thoughts, threat assessment



Strategies for Wellness Meetings

## Macro-Analysis – Level of Threat

- Assess & contextualize the **known risk factors**
- Examine the **totality of the circumstances**
- Identify **unknown areas** for probing



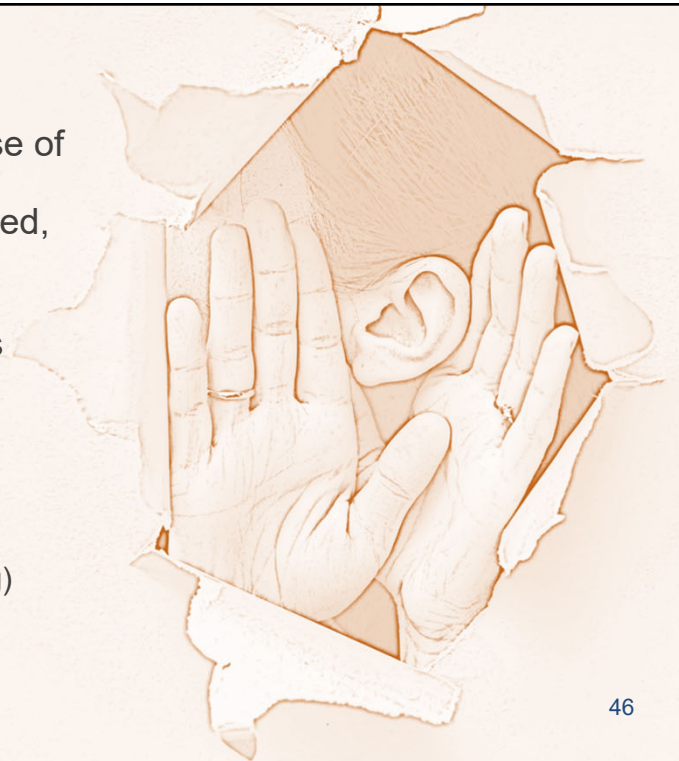
THE UNIVERSITY of TEXAS SYSTEM  
THIRTEEN INSTITUTIONS. UNLIMITED POSSIBILITIES.

45

45

## Active Listening

- **Goal:** Provide the person a sense of feeling heard and understood
- **Listener's Mindset:** Open-minded, objective, & impartial
- Pay full attention to the person
- Nodding, affirmative non-verbals
- Not interrupting; using silence
- Open-Ended Phrases
- Clarifying checks & validations:
  - Validating & emotional acknowledgements
  - Reflecting (mirroring/paraphrasing)
  - Summarizing
  - Restating



46

46

## Active Listening: Examples

47

Type	Example Prompts	
Validating	• “That sounds difficult.”	• “It’s <u>okay</u> to feel upset.”
Emotional Acknowledgements	• “You seem <u>disappointed</u> right now.”	• “Having to consider different options can be <u>stressful</u> to navigate.”
Reflecting	• “What I’m hearing is...”	• “Sounds like you are saying...”
Summarizing or Restating	• “Let me summarize to check my understanding [Repeat back]... Did I get that right?”	• “[Repeat/rephrase what the other person said]...Is this what you mean?”
Open-Ended Phrases	• “Tell me more about...” • “Explain/describe...”	• “What do you mean when you say...?” • “Help me understand...”
Affirmative Comm	• “Yes” • “I see.”	• “Go on.” • “Right.”

47



## Motivational Interviewing: De-escalation Tool

- **Goal:** Provides an avenue for someone to take action for changing behavior
- Conduct-specific focus
- The person is interested in the need for change
- Organize a plan & actionable pathway for change
- Facilitator uses Active Listening skills:
  - Validating & emotional acknowledgements
  - Reflecting (mirroring/paraphrasing)
  - Summarizing
  - Restating
- Avoid conflicts and stay solution-focused

48

48



## Motivational Interviewing: Crisis Mgt Example Prompts

Purpose	Example Prompts
Draw out ideas	<ul style="list-style-type: none"> <li>• “What are <u>your</u> thoughts/feelings about the situation?”</li> <li>• “What was <u>your</u> thought process at the time?”</li> <li>• “Who has been affected by <u>your</u> conduct?”</li> <li>• “How did <u>your</u> actions impact others?”</li> <li>• “What do <u>you</u> think about ____?”</li> </ul>
Be open to <u>all</u> types of responses	<ul style="list-style-type: none"> <li>• “How would <u>you</u> like to proceed?”</li> <li>• “What are some applicable takeaways that <u>you</u> can learn and grow from this experience?”</li> <li>• “The decision to accept or not accept certain terms or remedies is up to <u>you</u>.”</li> <li>• “What do <u>you</u> think might be getting in the way of <u>you</u> doing things differently in the future?”</li> </ul>

49

49

## Motivational Interviewing: Other Considerations

- Be mindful of the person’s desire, ability, reasons, and/or needs to change one’s own behavior, mindset, or attitude on the subject matter.
- Tailor facilitation prompts or responses based on the person’s interest to changing one’s own behavior.
- Acknowledge the person’s concerns, emotions, and needs.

50

50

# Motivational Interviewing: Refocusing Conversations

Purpose	Example Prompts
<b>If the person <u>doesn't respond to the relevant prompts</u>...</b>	<ul style="list-style-type: none"> <li>• <u>Rephrase</u> the prompt again.</li> <li>• Acknowledge the shift: <i>"It seems like the discussion is evolving to _____, but we started off exploring _____."</i></li> </ul>
<b>If the person <u>makes an argument about a different topic</u>...</b>	<ul style="list-style-type: none"> <li>• <u>Acknowledge</u> the concern &amp; attempt to finish the <u>initial discussion first</u>: <i>"I want to talk about that, but let's first finish addressing _____?"</i></li> </ul>
<b>If the person <u>attempts to change the subject</u>...</b>	<ul style="list-style-type: none"> <li>• It might be to <u>vent</u> or release some tension.</li> <li>• <u>Prompt</u> the person to discuss what's on their mind.</li> <li>• Then, use <u>active listening</u> to acknowledge the person's current <u>concerns, emotions, and/or needs</u>.</li> <li>• Try to <u>link</u> the person's concerns with the initial discussion topic.</li> </ul>

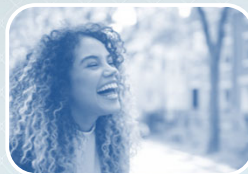
51

51

## Micro-Expressions: Receptive Signals



Eyebrow Flashes



Head Tilt Up



Smiling



Head Nodding



Mirroring Body Language



Inward Lean



Verbal Nudges



Focused Listening & Silence

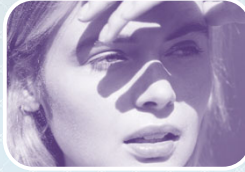
52

52

## Micro-Expressions: Closed Signals



Elongated Stare



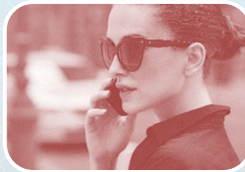
Eye Squinting



Furrowed Eyebrows



Pursed Lips



Body Scan



Eye Roll



Protective Factors:  
Stability & Support

# Protective Factors for Preventing Targeted, Premeditated Violence



## Individual Protective Factors

Personal Attitudes, Beliefs, & Behaviors



## Relationship Protective Factors

Peers, Social Groups, & Family Influences



## Community Protective Factors

Characteristics of the Physical & Social Environment



## Societal Protective Factors

Societal & Cultural Norms



THE UNIVERSITY of TEXAS SYSTEM  
THIRTEEN INSTITUTIONS. UNLIMITED POSSIBILITIES.

Source: *Culturally Competent Threat Assessment, International Alliance for Care & Threat Teams (InterACTT) (2022)*

# Relationship of the Protective Factors



THE UNIVERSITY of TEXAS SYSTEM  
THIRTEEN INSTITUTIONS. UNLIMITED POSSIBILITIES.

# Individual Protective Factors



Empathy toward Others



Personal Accountability



Positive Future Viewpoint



Sense of Identity



No Weapons Access



Resiliency



Emotional Stability



Positive Self-Esteem

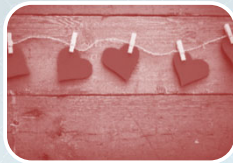


Source: *Culturally Competent Threat Assessment, International Alliance for Care & Threat Teams (InterACTT) (2022)*

# Relationship Protective Factors



Family & Peer Support



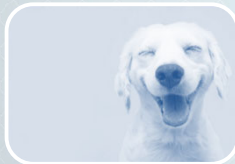
Emotionally Connected to Others



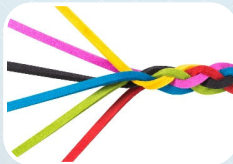
Social Outlets



Intimate Relationships



Feeling Accepted & Valued



Sharing Positive Future Viewpoints



Consequence Aware



Sharing Non-Violent Activities



Source: *Culturally Competent Threat Assessment, International Alliance for Care & Threat Teams (InterACTT) (2022)*

# Community Protective Factors



Positive Work Setting



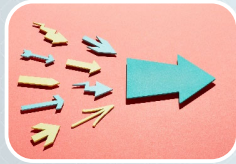
Academic Environment



Housing Stability



Affordable Transportation



Community Resources



Church/Spiritual Outlets



Extracurricular Activities



Community Engagement



Source: *Culturally Competent Threat Assessment, International Alliance for Care & Threat Teams (InterACTT) (2022)*

# Societal Protective Factors



Positive Social Norms



Laws & Policies



Cultural Norms



Geographic Norms



Healthy Economy



Source: *Culturally Competent Threat Assessment, International Alliance for Care & Threat Teams (InterACTT) (2022)*

## Best Practices for Title IX & BIT's

- Collaboration
- Partnerships
- Open Communication Pathways
- Resource Sharing
- Continuing Professional Development & Inter-Relationship Building
- Collective Problem-Solving
- Open to Constructive Disagreements
- Transformational Relationships & Goals
- Holistic Focus
- Documentation



## Documentation & Record Keeping: TIX & BIT's

- When disclosing information under FERPA's "health or safety emergency" exception, document the following:
- What is the **significant threat** to the health or safety of a student or other individual(s) that formed the **basis of the discloser**?
  - To **whom, when, what,** and **how** the information was disclosed?
  - What is the **legitimate educational interest** in the behavior of the student?
  - Intake & Initial Triage
  - Case Management Timelines, Decisions & Interventions
  - Contact & Communications
  - Data Systems for Electronic & Hard Copy Records



## Bottom Line for Institutions

- Utilize the **Title IX Office**, **Behavior Intervention Teams (BIT's)**, and **threat assessment tools** to mitigate institutional risks and address campus safety
- Establish & maintain a **communication plan** to key partners
- Know WHO is making the **key decisions**
- Be **consistent** with communication & decision-making
- Refer to **case precedent** (e.g. similar fact or elements)
- Follow your **policy** and **process**
- **Document** accordingly



THE UNIVERSITY of TEXAS SYSTEM  
THIRTEEN INSTITUTIONS. UNLIMITED POSSIBILITIES.

63

63

## Support & Resources for YOU

Your Supervisor  
and/or Human  
Resources (HR)

Employee  
Assistance  
Program (EAP)

Behavior  
Intervention Team  
(BIT)

Dean of Students  
Office

Campus Police &  
Victim Services

Ombuds Office

Legal Affairs

Off Campus  
Medical and/or  
Mental Health  
Providers

64






A slide titled "Q & A" featuring five colorful speech bubbles (red, orange, blue, teal) containing white question marks. The background is a light blue grid pattern. In the bottom left corner is the University of Texas System logo and text: "THE UNIVERSITY of TEXAS SYSTEM THIRTEEN INSTITUTIONS. UNLIMITED POSSIBILITIES." In the bottom right corner is the number "65".

65

## Contact Information

<b>Krista Anderson</b>
Systemwide Title IX Coordinator
Office of Systemwide Compliance UT System (Austin, TX)
Phone: 512-664-9050
Email: <a href="mailto:kranderson@utsystem.edu">kranderson@utsystem.edu</a>



A slide titled "Contact Information" with a light blue grid background. It features a table with contact details for Krista Anderson. In the bottom left corner is the University of Texas System logo and text: "THE UNIVERSITY of TEXAS SYSTEM THIRTEEN INSTITUTIONS. UNLIMITED POSSIBILITIES." In the bottom right corner is the number "66".

66